

# GROUP 52A

# INTERIOR

## CONTENTS

<p><b>SPECIAL TOOL</b> ..... <b>52A-2</b></p> <p><b>INSTRUMENT PANEL ASSEMBLY*</b> ..... <b>52A-3</b></p> <p style="padding-left: 20px;">REMOVAL AND INSTALLATION ..... <b>52A-3</b></p> <p style="padding-left: 20px;">DISASSEMBLY AND REASSEMBLY ..... <b>52A-8</b></p> <p><b>SYSTEM UP TRAY</b> ..... <b>52A-9</b></p> <p style="padding-left: 20px;">REMOVAL AND INSTALLATION ..... <b>52A-9</b></p> <p><b>FLOOR CONSOLE ASSEMBLY</b> .... <b>52A-10</b></p> <p style="padding-left: 20px;">REMOVAL AND INSTALLATION &lt;M/T&gt; .. <b>52A-10</b></p> <p><b>TRIMS</b> ..... <b>52A-11</b></p> <p style="padding-left: 20px;">INTERIOR TRIM ..... <b>52A-11</b></p> <p style="padding-left: 20px;">REMOVAL AND INSTALLATION ..... <b>52A-11</b></p> <p style="padding-left: 20px;">DOOR TRIM ..... <b>52A-13</b></p> <p style="padding-left: 20px;">REMOVAL AND INSTALLTION ..... <b>52A-13</b></p> <p style="padding-left: 20px;">TAILGATE TRIM ..... <b>52A-15</b></p> <p style="padding-left: 20px;">REMOVAL AND INSTALLATION ..... <b>52A-15</b></p> <p><b>HEADLINING</b> ..... <b>52A-16</b></p> <p style="padding-left: 20px;">REMOVAL AND INSTALLATION ..... <b>52A-16</b></p> <p style="padding-left: 20px;">DISASSEMBLY AND REASSEMBLY ..... <b>52A-19</b></p>	<p><b>INSIDE REAR VIEW MIRROR</b> ..... <b>52A-19</b></p> <p><b>FRONT SEAT ASSEMBLY*</b> ..... <b>52A-20</b></p> <p style="padding-left: 20px;">REMOVAL AND INSTALLATION &lt;Except RECARO seat&gt; ..... <b>52A-20</b></p> <p style="padding-left: 20px;">REMOVAL AND INSTALLATION &lt;RECARO seat&gt; ..... <b>52A-22</b></p> <p style="padding-left: 20px;">DISASSEMBLY AND REASSEMBLY &lt;Except RECARO seat&gt; ..... <b>52A-23</b></p> <p style="padding-left: 20px;">DISASSEMBLY AND REASSEMBLY &lt;RECARO seat&gt; ..... <b>52A-26</b></p> <p><b>REAR SEAT ASSEMBLY</b> ..... <b>52A-27</b></p> <p style="padding-left: 20px;">REMOVAL AND INSTALLATION ..... <b>52A-27</b></p> <p style="padding-left: 20px;">DISASSEMBLY AND REASSEMBLY ..... <b>52A-28</b></p> <p><b>FRONT SEAT BELT*</b> ..... <b>52A-30</b></p> <p style="padding-left: 20px;">REMOVAL AND INSTALLATION ..... <b>52A-30</b></p> <p style="padding-left: 20px;">INSPECTION ..... <b>52A-31</b></p> <p><b>REAR SEAT BELT</b> ..... <b>52A-32</b></p> <p style="padding-left: 20px;">REMOVAL AND INSTALLATION ..... <b>52A-32</b></p>
--	---

### WANINGS REGARDING SERVICING OF SUPPLEMENTAL RESTRAINT SYSTEM (SRS) EQUIPPED VEHICLES

**WARNING**

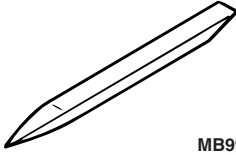
- *Improper service or maintenance of any component of the SRS, or any SRS-related component, can lead to personal injury or death to service personnel (from inadvertent firing of the air bag) or to the driver and passenger (from rendering the SRS inoperative).*
- *Service or maintenance of any SRS component or SRS-related component must be performed only at an authorized MITSUBISHI dealer.*
- *MITSUBISHI dealer personnel must thoroughly review this manual, and especially its GROUP 52B - Supplemental Restraint System (SRS) before beginning any service or maintenance of any component of the SRS or any SRS-related component.*

**NOTE**

The SRS includes the following components: SRS air bag control unit, SRS warning light, front impact sensors, air bag module, clock spring, and interconnecting wiring. Other SRS-related components (that may have to be removed/installed in connection with SRS service or maintenance) are indicated in the table of contents by an asterisk (\*).

**SPECIAL TOOL**

M1521000600383

Tool	Tool number	Name	Use
 MB990784	MB990784	Ornament remover	Removal of switch, trim, etc.

## INSTRUMENT PANEL ASSEMBLY

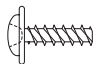
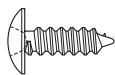
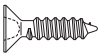
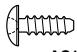
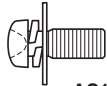


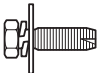
### REMOVAL AND INSTALLATION

M1521001701308

**⚠ WARNING**

**For removal and installation of the passenger's side air bag module, always observe the service procedures described in GROUP 52B, Driver's, Front Passenger's Air Bag Module(s) and Clock Spring (Refer to P.52B-145).**

The following bolts and screws are used for installing the instrument panel. Bolts and screws are indicated as marks shown in the illustration in the sections of "Removal and Installation" and "Disassembly and Assembly."

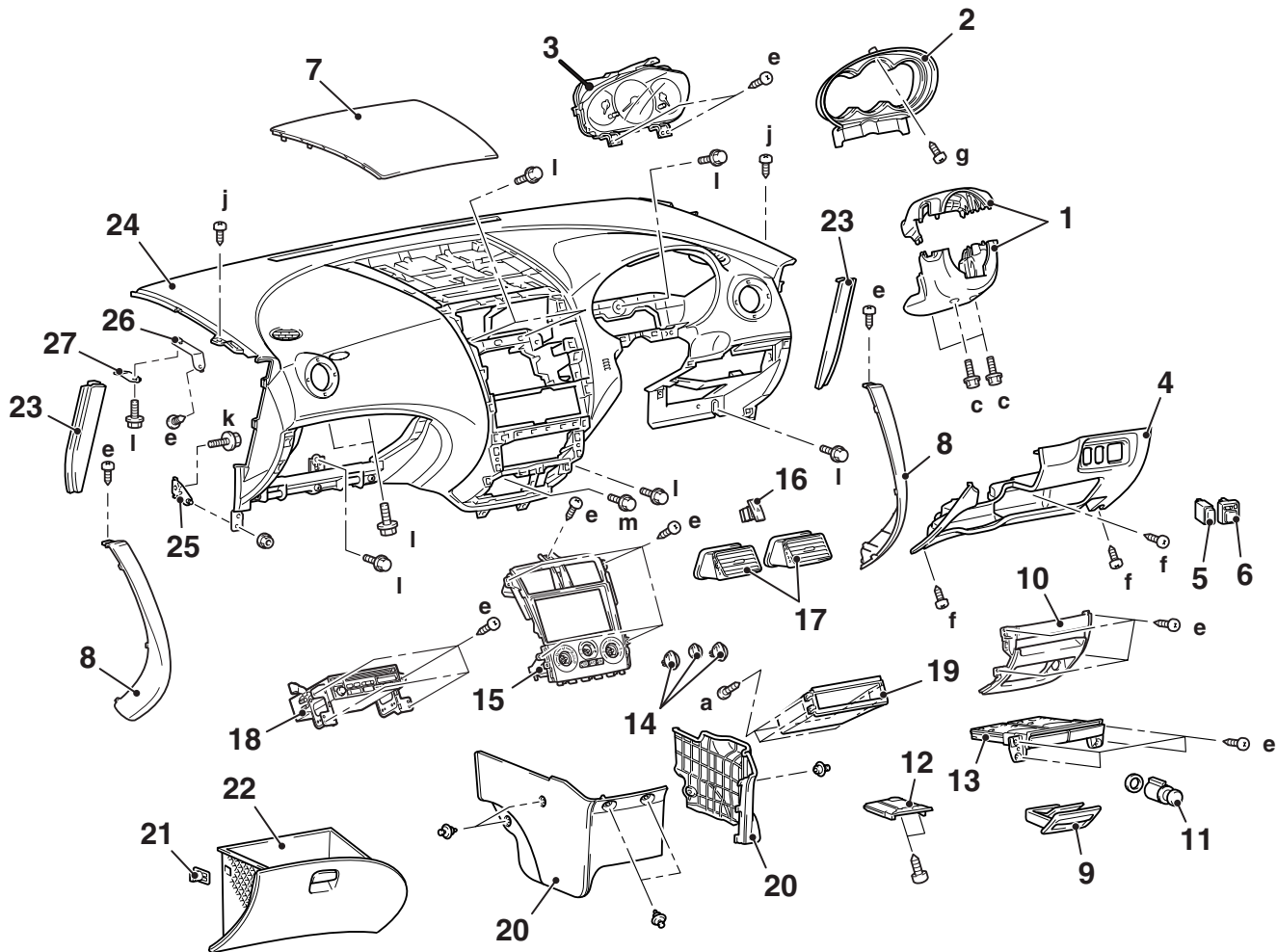
Name	Symbol	Size (D × L) mm	Colour	Shape
Tapping screw	a	4 × 12	-	 AC104436
	b	5 × 12	-	
	c	5 × 20	-	
	d	5 × 12	-	 AC104450
	e	5 × 16	-	
	f		Black	
	g	5 × 20	Black	 AC104448
Washer assembly screw	h	5 × 12	-	 AC104931
	i	5 × 16	Black	 AC104424
Washer assembly bolt	j	5 × 12	-	 AC104420
	k	6 × 12	-	 AC104416
	l	6 × 16	-	 AC104417
	m	6 × 20	-	

**CAUTION**

- Refer to GROUP 52B, SRS Service Precautions [P.52B-5](#) and Driver's, Front Passenger's Air bag Module(s) and Clock Spring [P.52B-145](#) before removing the passenger side air bag module.
- Do not subject the SRS-ECU to any shocks when removing or installing the instrument panel.

**Pre-removal and Post-installation Operation**

- Removal and Installation of Front Pillar Trim (Refer to [P.52A-11](#)).
- Removal and Installation of Hood Lock Release Handle (Refer to GROUP 42, Hood [P.42-5](#)).



AC400406 AB

&lt;&lt;A&gt;&gt;

**Removal steps**

1. Steering column cover
2. Combination meter bezel
3. Combination meter assembly
4. Lower panel
5. Fog lamp switch <Vehicles with fog lamp>
6. Remote control mirror switch
  - Steering wheel (refer to GROUP 37, Steering Wheel [P.37-90](#)).
  - Air bag module (refer to GROUP 52B, Driver's, Front Passenger's Air Bag Module(s) and Clock Spring [P.52B-145](#)).

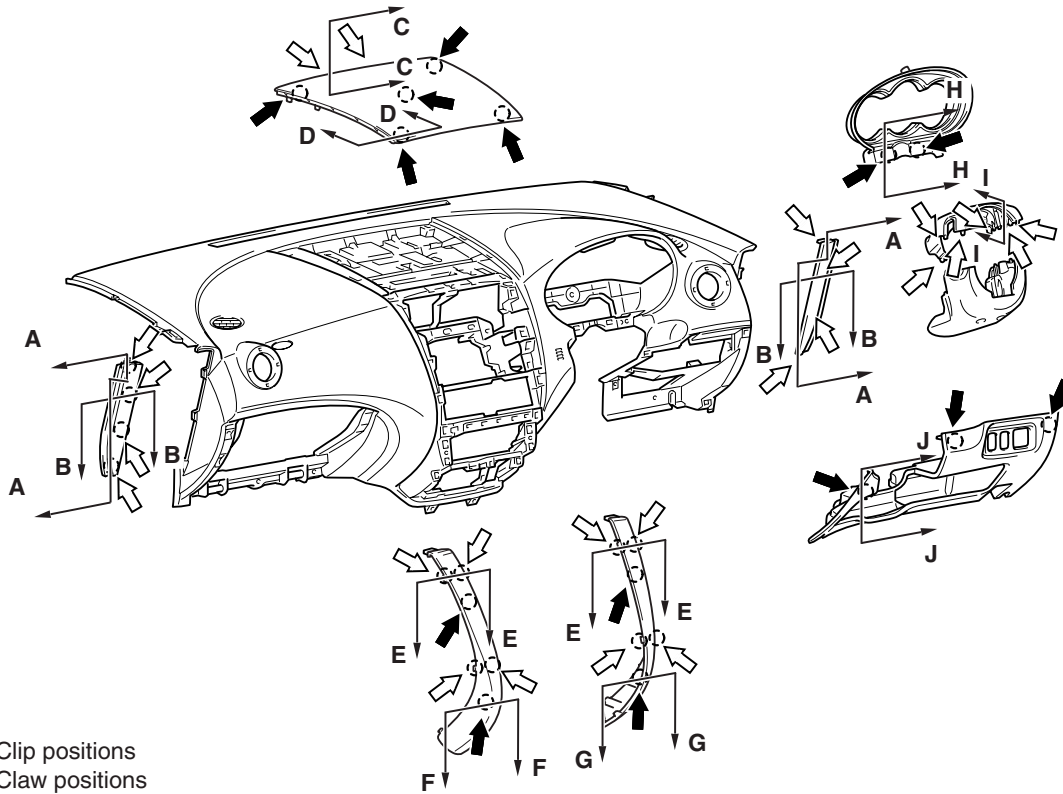
**Removal steps (Continued)**

- Steering shaft (refer to GROUP 37, Steering Shaft [P.37-92](#)).
7. Upper centre panel
  8. Console panel
  9. Ashtray
  10. Lower centre panel
  11. Cigarette lighter
  12. Ashtray cover
  13. Parcel box bracket
  14. Air control knob
  15. Heater control panel
  16. Hazard lamp switch
  17. Air outlet
  18. Radio assembly

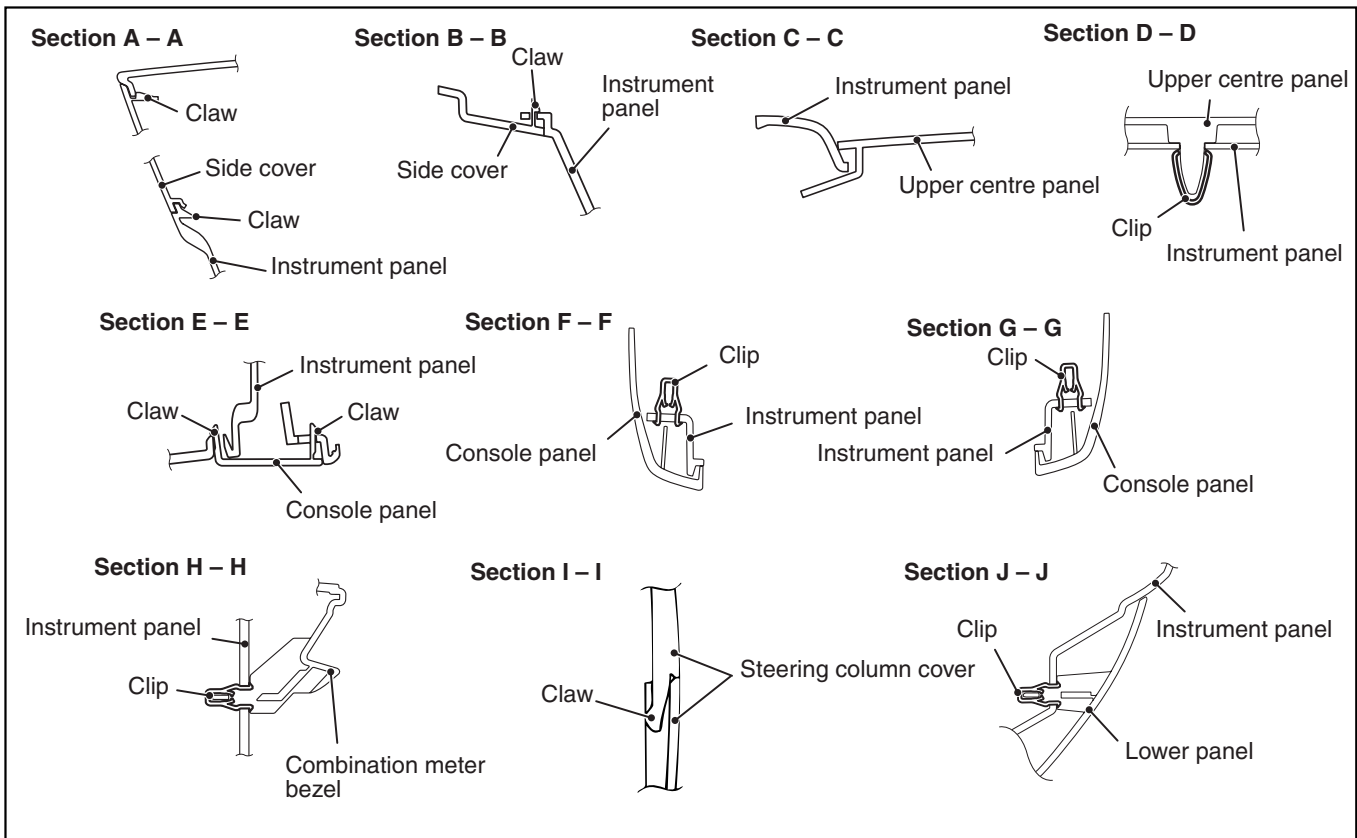
**Removal steps (Continued)**

19. Box
20. Centre console
21. Glove box stopper
22. Glove box assembly
23. Side cover
  - Clock spring connector
  - Column switch connector
  - Ignition key reminder switch connector
  - Ignition switch connector
  - Air bag module (squib) (front passenger's side) connector
24. Instrument panel assembly
25. Front cowl side bracket
26. Glove box striker A
27. Glove box striker B

CLIP AND CRAW POSITIONS



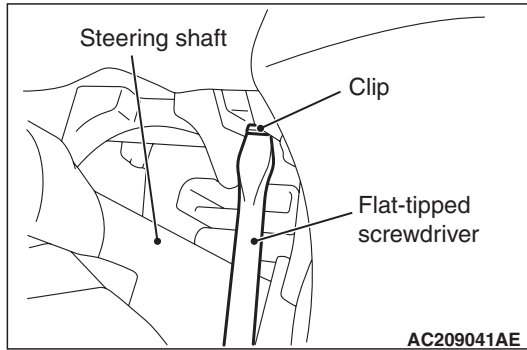
NOTE  
 (1) : Clip positions  
 (2) : Claw positions



**REMOVAL SERVICE POINTS**

**<<A>> COMBINATION METER BEZEL**

**REMOVAL**



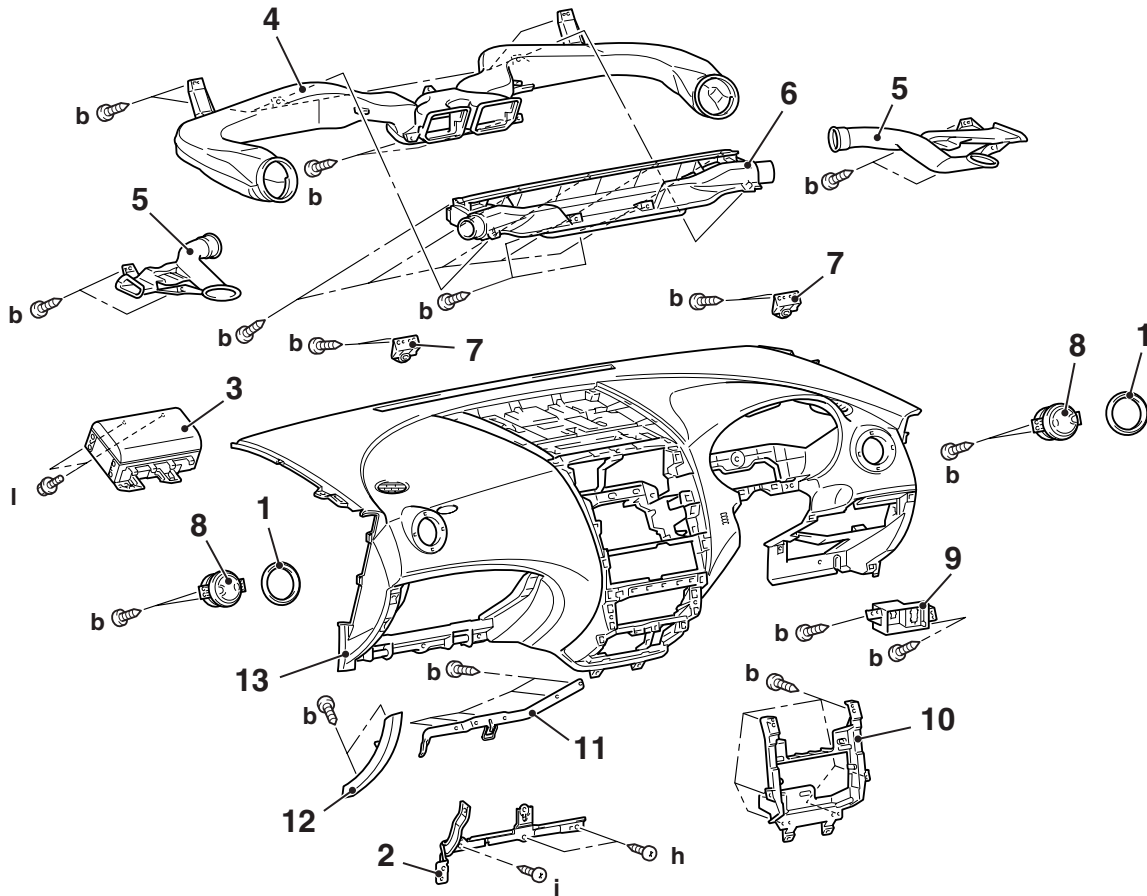
Unclip the combination meter bezel with a flat-tipped screwdriver as shown, and remove the combination meter bezel.

## DISASSEMBLY AND REASSEMBLY

M1521001900484

**CAUTION**

Refer to GROUP 52B, Driver's, Front Passenger's Air bag Module(s) and Clock Spring P.52B-145 before removing the passenger's side air bag module.



AC401816AB

**Disassembly steps**

1. Side air outlet bezel
2. Under reinforcement
3. Air bag module (passenger's side)
4. Ventilator air distribution duct
5. Side defroster duct
6. Defroster nozzle
7. Upper side bracket

**Disassembly steps (Continued)**

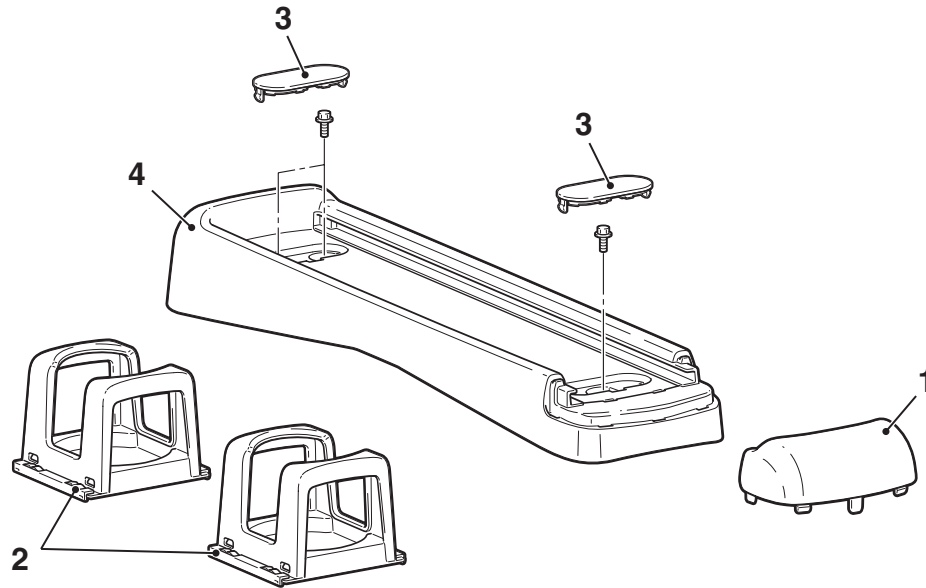
8. Side air outlet
9. Connector holder
10. Centre reinforcement
11. Glove box striker
12. End cover
13. Instrument panel



# SYSTEM UP TRAY

## REMOVAL AND INSTALLATION

M1521009000021



AC401818  
AB

### Removal steps

1. Floor console cover
2. Cup holder

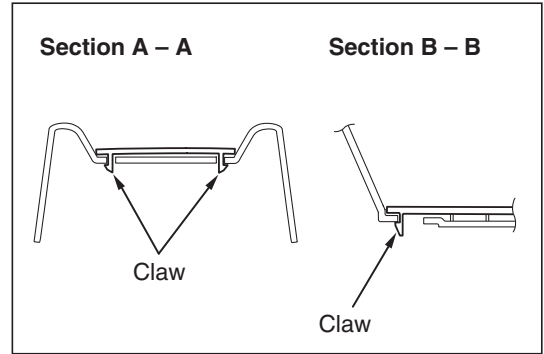
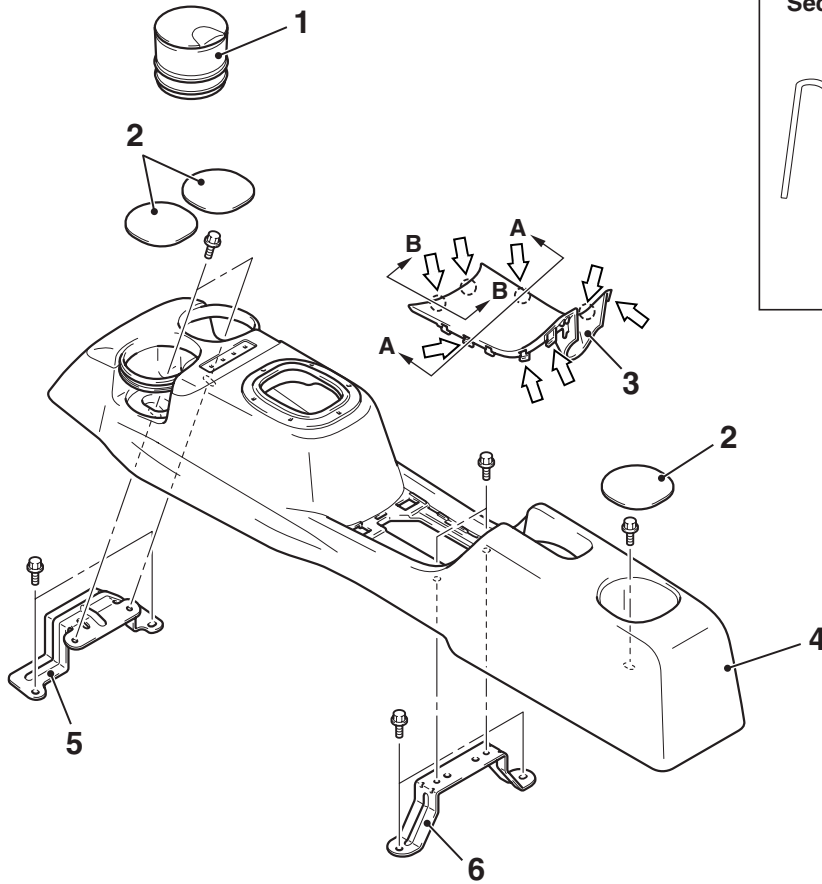
### Removal steps (Continued)

3. Floor console panel
4. Floor console

# FLOOR CONSOLE ASSEMBLY

## REMOVAL AND INSTALLATION <M/T>

M1521002200585



NOTE  
← : Claw positions

1. Ashtray
- Removal steps**
2. Console panel
  3. Floor console centre panel

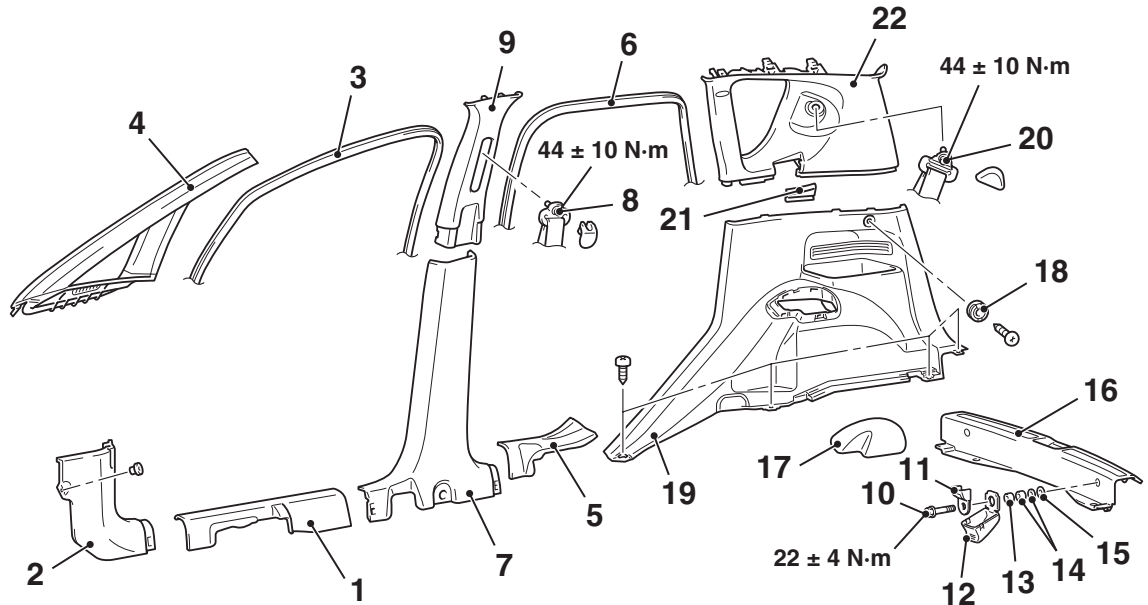
- AC600651AC
- Removal steps (Continued)**
4. Floor console assembly
  5. Floor console front bracket
  6. Floor console centre bracket

TRIMS

INTERIOR TRIM

REMOVAL AND INSTALLATION

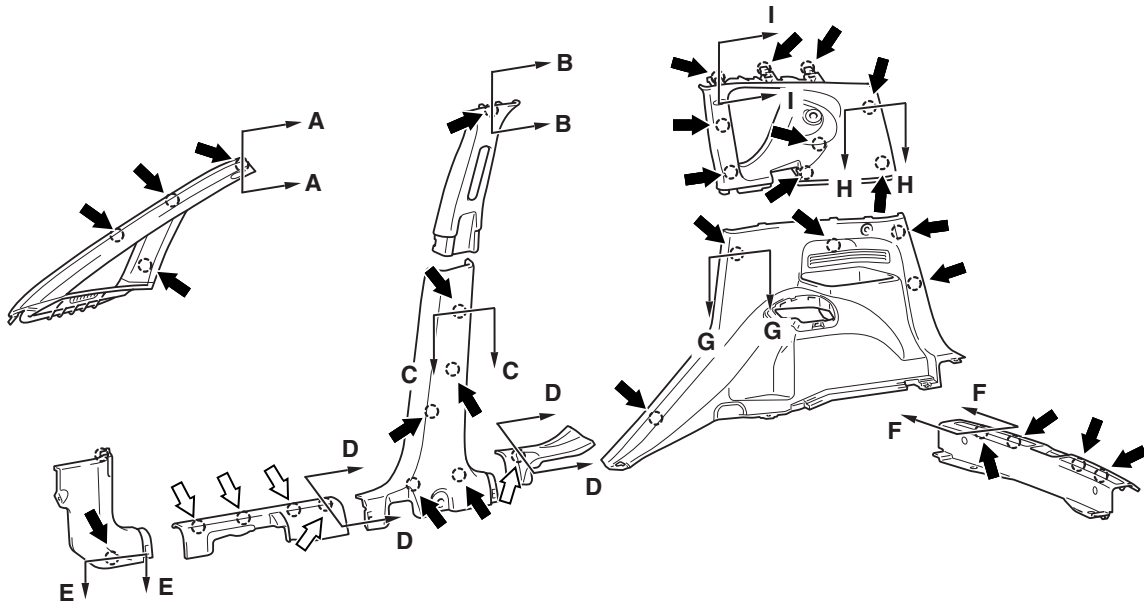
M1521001100585



AC401821 AB

- |                               |                               |
|-------------------------------|-------------------------------|
| 1. Front scuff plate          | 12. Cover                     |
| 2. Cowl side trim             | 13. Spacer                    |
| 3. Door opening trim          | 14. Plain washer              |
| 4. Front pillar trim          | 15. Fiber washer              |
| 5. Rear scuff plate           | 16. Rear end trim             |
| 6. Rear door opening trim     | 17. Quarter trim cap          |
| 7. Centre pillar trim lower   | 18. Quarter trim hook         |
| 8. Front seat belt connection | 19. Quarter trim lower        |
| 9. Centre pillar trim upper   | 20. Rear seat belt connection |
| 10. Washer assembled bolt     | 21. Rear seat belt clip       |
| 11. Child restraint fitting   | 22. Quarter trim upper        |

CLIP AND CLAW POSITIONS



NOTE

- (1) : Clip positions
- (2) : Claw positions

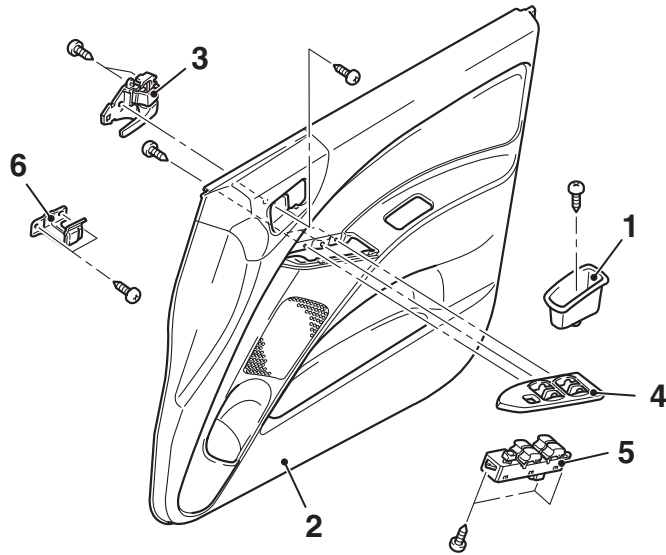
<p><b>Section A – A</b></p> <p>Clip</p> <p>Front pillar trim</p>	<p><b>Section B – B</b></p> <p>Clip</p> <p>Centre pillar trim upper</p>	<p><b>Section C – C</b></p> <p>Clip</p> <p>Centre pillar trim lower</p>
<p><b>Section D – D</b></p> <p>Front scuff plate, rear scuff plate</p> <p>Claw</p>	<p><b>Section E – E</b></p> <p>Clip</p> <p>Cowl side trim</p>	<p><b>Section F – F</b></p> <p>Rear end trim</p> <p>Clip</p>
<p><b>Section G – G</b></p> <p>Clip</p> <p>Quarter trim lower</p>	<p><b>Section H – H</b></p> <p>Clip</p> <p>Quarter trim upper</p>	<p><b>Section I – I</b></p> <p>Clip</p> <p>Quarter trim upper</p>

DOOR TRIM

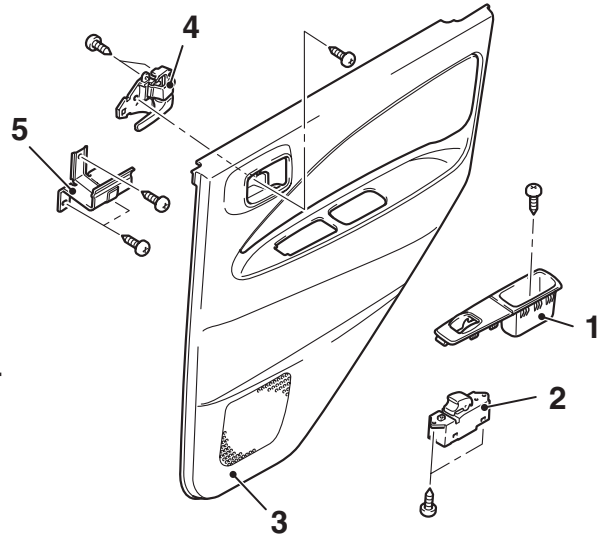
REMOVAL AND INSTALLTION

M1521006400310

<Front door trim>



<Rear door trim>



AC208577AC

**Front door trim removal steps**

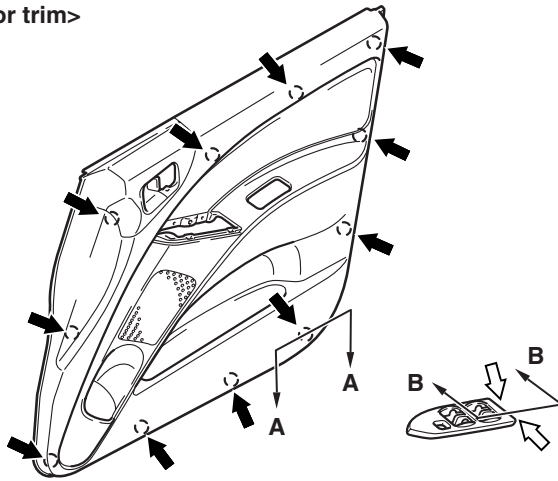
- >>A<<
1. Door trim box
  2. Front door trim
  3. Inside door handle
  4. Power window switch panel
  5. Power window switch
  6. Pull handle bracket

**Rear door trim removal steps**

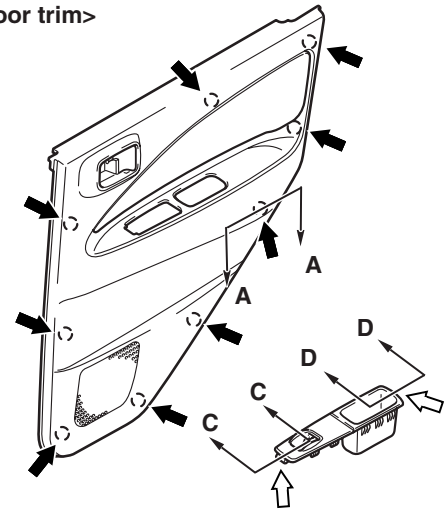
- >>A<<
1. Power window switch panel
  2. Power window switch
  3. Rear door trim
  4. Inside door handle
  5. Pull handle bracket

CLIP AND CLAW POSITIONS

<Front door trim>

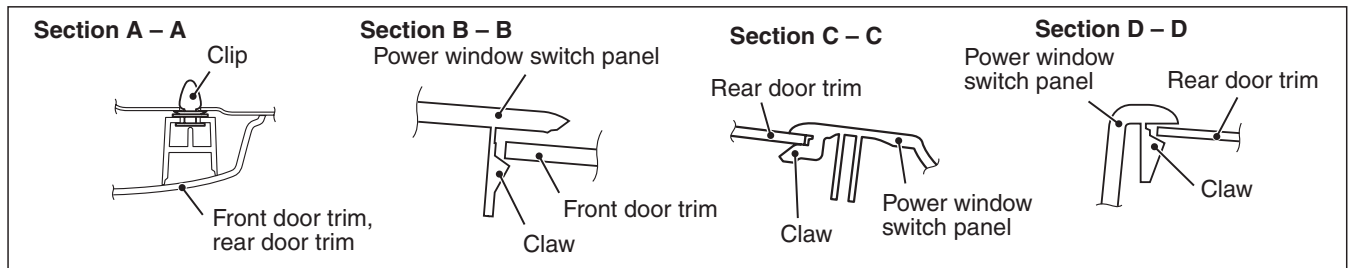


<Rear door trim>



NOTE

- (1) : Clip positions
- (2) : Claw positions



AC208592AB

INSTALLATION SERVICE POINT

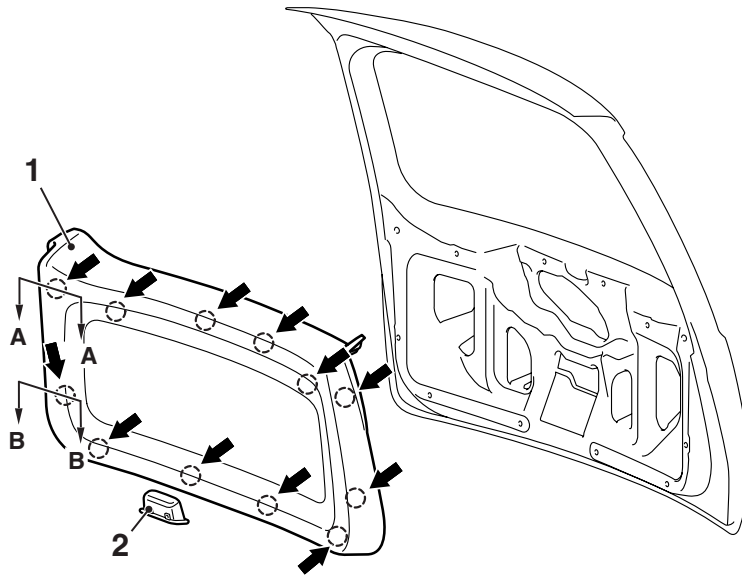
>>A<< POWER WINDW SWICH PANEL  
INSTALLATION

After installing or replacing the power window switch, make the system learn the fully closed position of the power windows (Refer to GROUP 42, Door Glass and Regulator P.42-40).

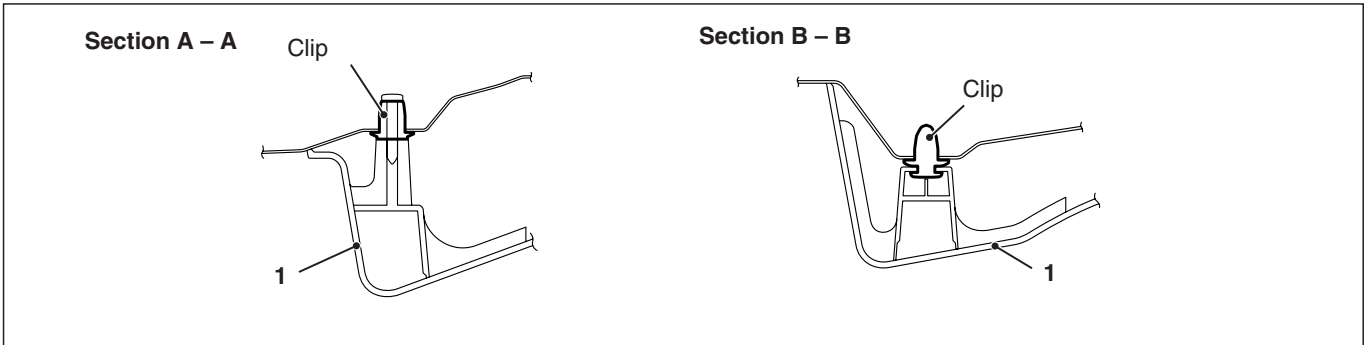
# TAILGATE TRIM

## REMOVAL AND INSTALLATION

M1521006500191



NOTE  
← : Clip positions



AC208445 AB

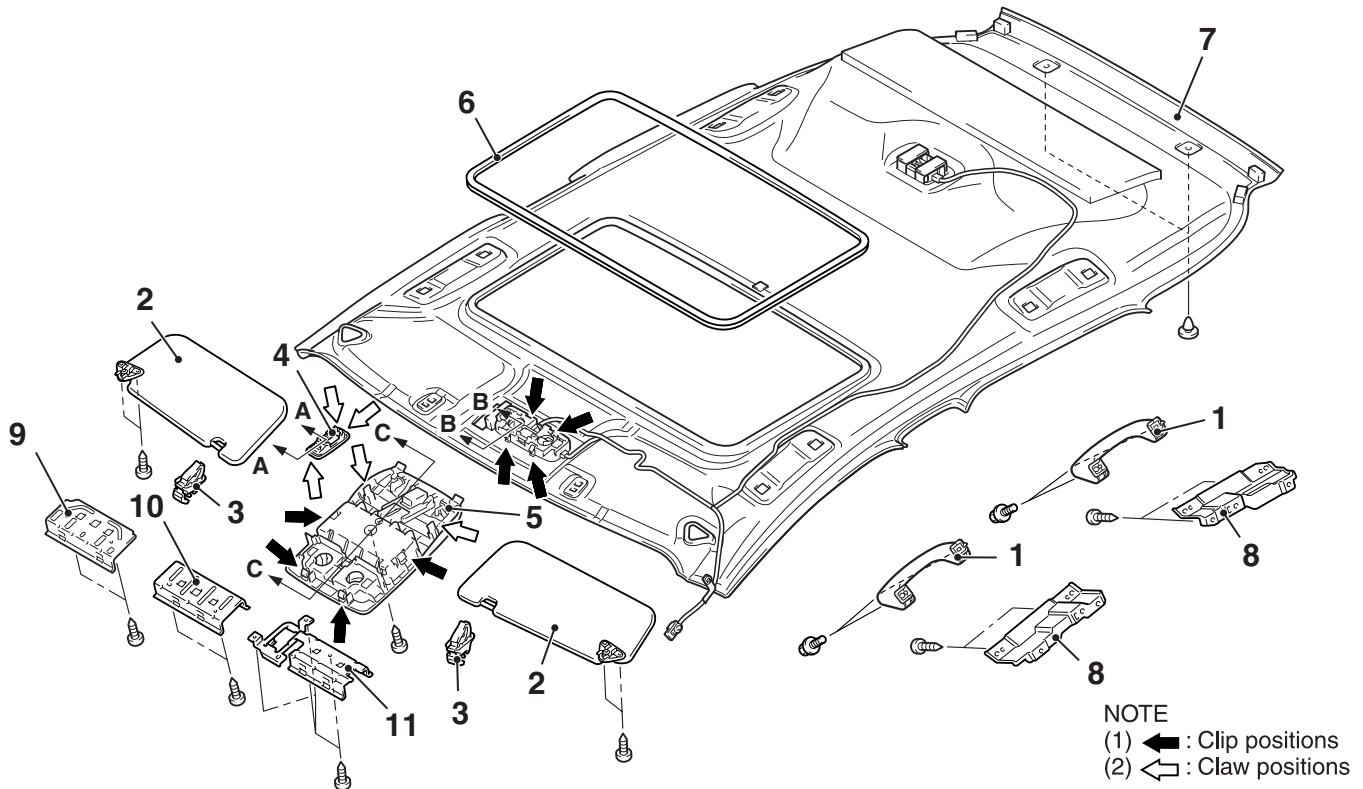
### Removal steps

1. Tailgate trim
2. Tailgate pull handle

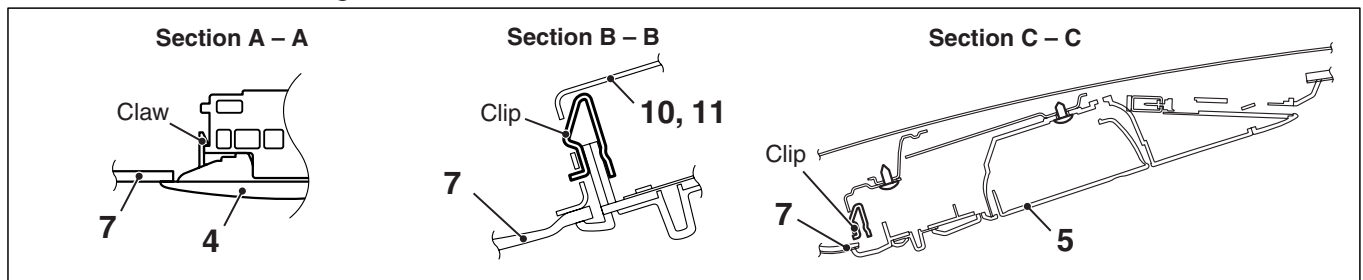
# HEADLINING

## REMOVAL AND INSTALLATION

M1521001400724



NOTE  
(1) : Clip positions  
(2) : Claw positions



AC402991AD

### Removal steps

- 1. Roof inside assist grip
- 2. Sunvisor
- <<A>> 3. Sunvisor holder
- 4. Sunroof switch cover <Vehicles with sunroof >
- <<B>> 5. Overhead console assembly <Vehicles with overhead console>
- 6. Sunroof opening trim <Vehicles with sunroof>
- <<C>> 7. Headlining assembly

### Removal steps (Continued)

- 8. Assist grip bracket
- 9. Overhead console bracket <Vehicles with overhead console>
- 10. Map lamp bracket <Vehicles with sunroof>
- 11. Map lamp bracket <Vehicles with sunroof>



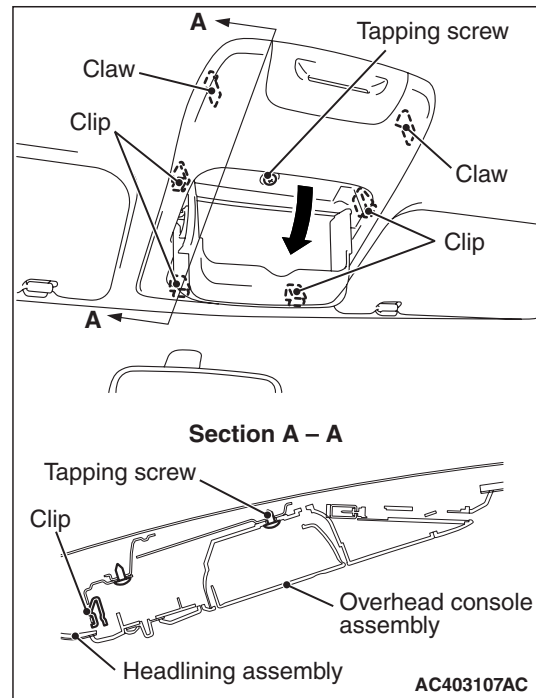
REMOVAL SERVICE POINTS

<<A>> SUNVISOR HOLDER REMOVAL

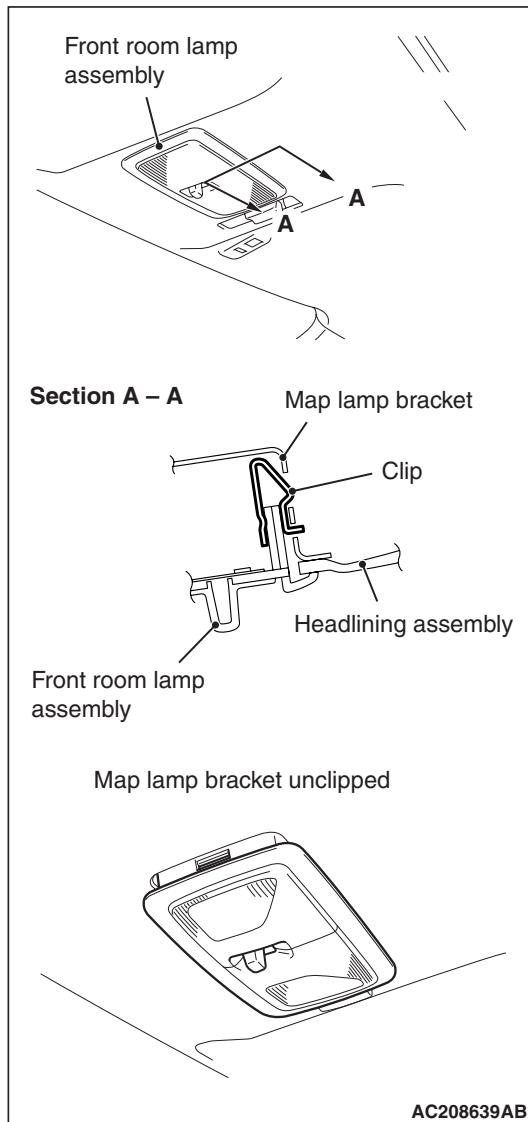


Use a flat-tipped screwdriver to disengage the tab of the sunvisor holder, and remove it using moderate pressure from the forefinger and thumb.

<<B>> OVERHEAD CONSOLE ASSEMBLY REMOVAL



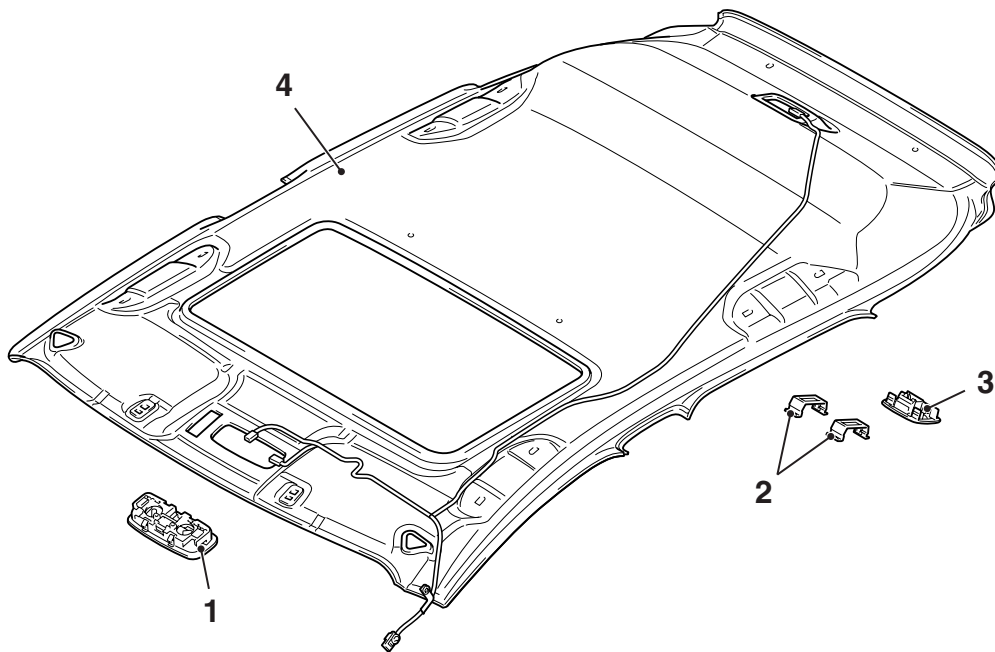
1. Open the sunglasses holder, and remove the tapping screw.
2. Shift downward the overhead console assembly while pressing toward the vehicle rear, and disengage the overhead console assembly and overhead console bracket.
3. Unlatch the clips and claws shown in the illustration from the roof panel, and remove the overhead console assembly.

**<<C>> HEADLINING ASSEMBLY  
REMOVAL**

For the vehicles without overhead console, press the front room lamp assembly toward the vehicle front to disengage the map lamp bracket and front room lamp assembly clip. Remove the headlining assembly, with the room lamp assembled to the headlining, from the vehicle.

**DISASSEMBLY AND REASSEMBLY**

M1521009100125



AC509882AB

**Disassembly steps**

1. Front room lamp assembly
2. Rear room lamp clip

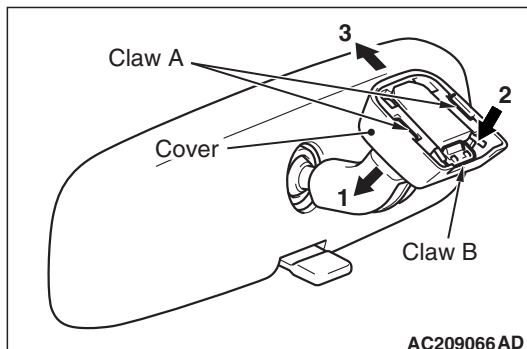
**Disassembly steps (Continued)**

3. Rear room lamp assembly
4. Headlining

**INSIDE REAR VIEW MIRROR**

M1521002600301

**REMOVAL SERVICE POINT**



1. Disengage the claw A and lower the cover toward arrow 1 direction.
2. Push the claw B toward arrow 2 direction to unlock, and pull out the mirror toward arrow 3 direction.
3. Pull out the mirror toward arrow 3 direction.

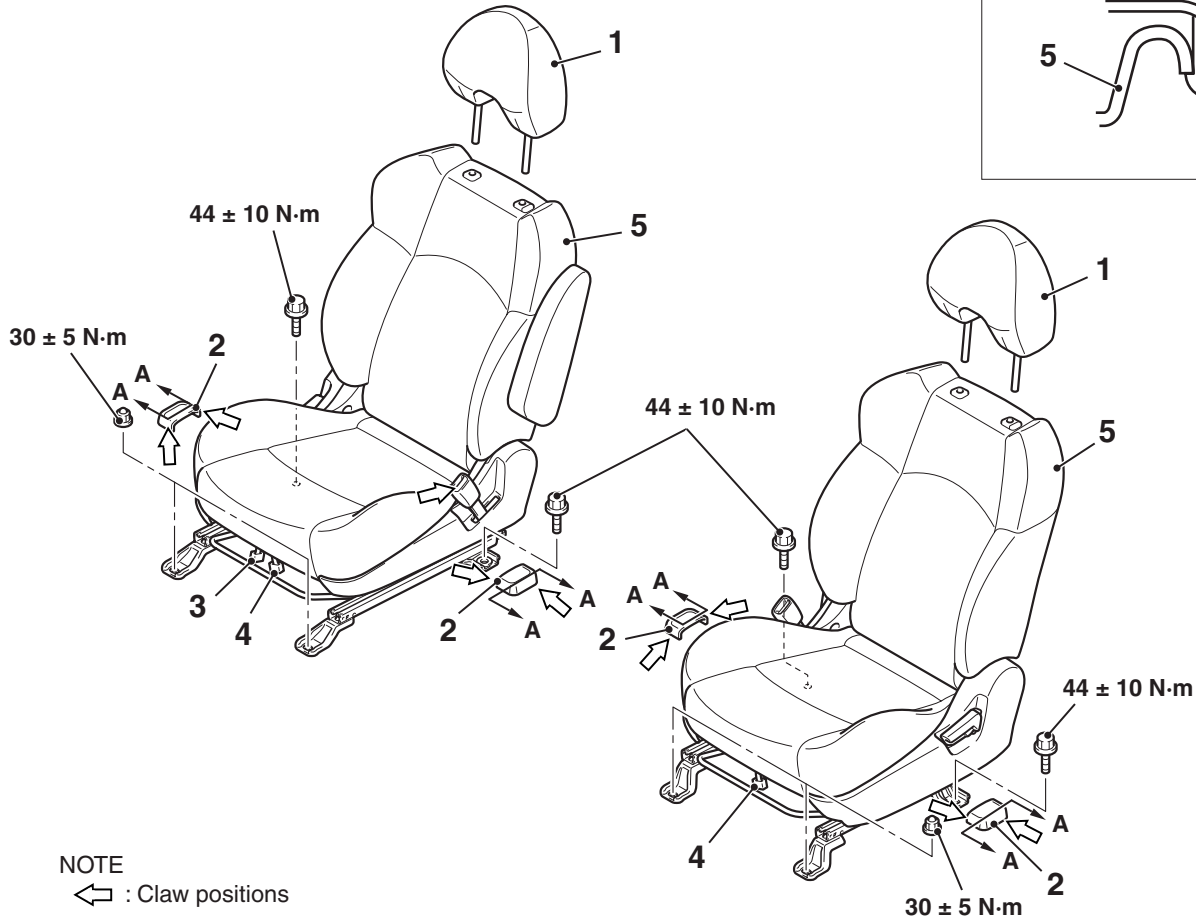
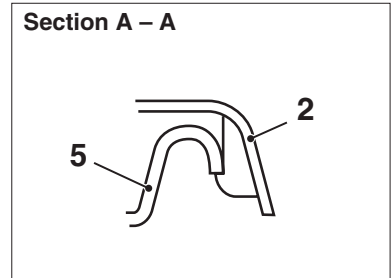
# FRONT SEAT ASSEMBLY

## REMOVAL AND INSTALLATION <Except RECARO seat>

M1522001301013

**CAUTION**

For the removal of the front seat assembly on vehicles with the side-air bags, refer to GROUP 52B, Service Precautions P.52B-5 and Side and Curtain Air Bag Module P.52B-152.

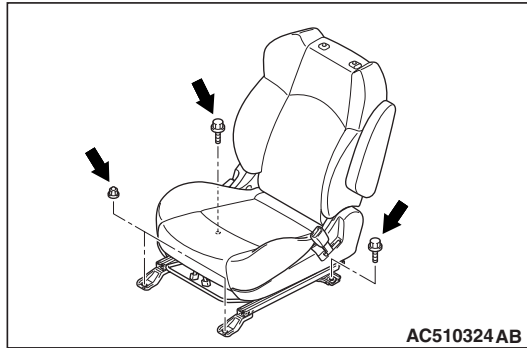


NOTE  
↔ : Claw positions

- 1. Headrest
- Removal steps**
- 2. Rear anchor cover
- 3. Seat belt switch connector (driver's side)

- AC510323AB
- Removal steps (Continued)**
- 4. Side-air bag module (squib) connector <Vehicles with side and curtain air bag module>
  - >>A<< 5. Front seat assembly

**INSTALLATION SERVICE POINT**  
**>>A<< FRONT SEAT ASSEMBLY INSTAL-**  
**LATION**



1. Confirm that the seat slide is locked. Then temporarily tighten all the nuts and bolts with no load applied to the front seat cushion.
2. Tighten all the nuts and bolts to the specified torque.

**Tightening torque:**

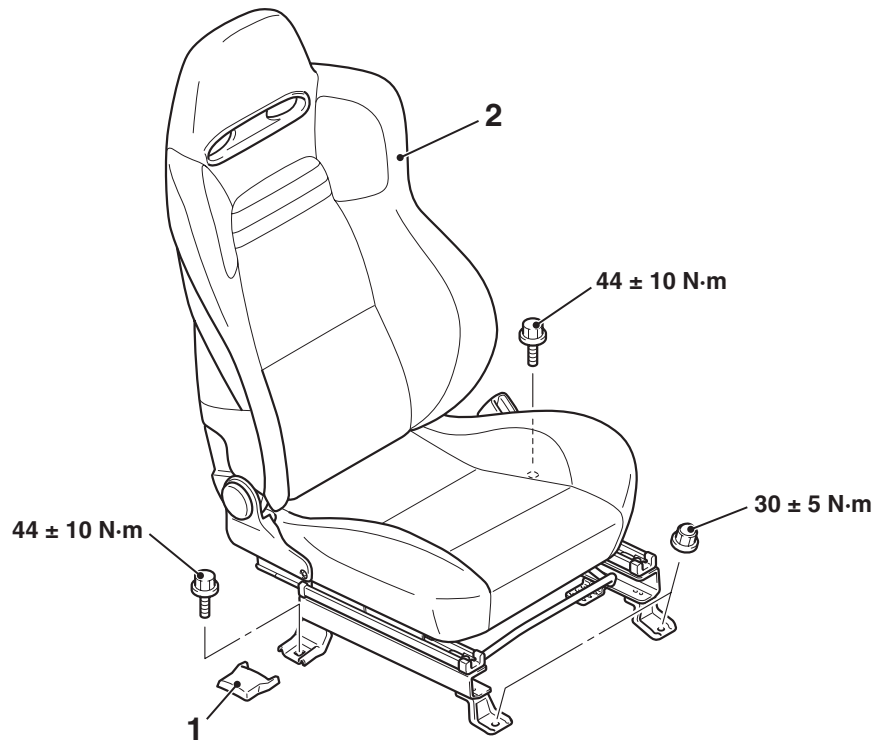
**Bolt:  $44 \pm 10$  N·m**

**Nut:  $30 \pm 5$  N·m**

## REMOVAL AND INSTALLATION

&lt;RECARO seat&gt;

M1522001301024

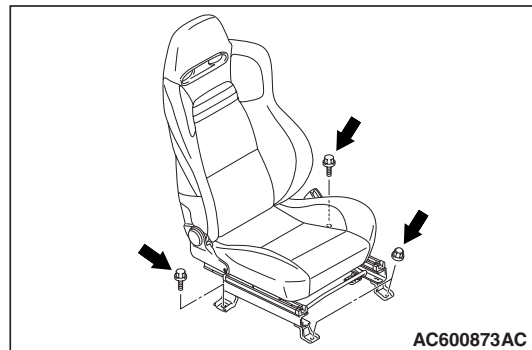


AC600697AC

**Removal steps**

1. Front seat anchor cover
2. Front seat assembly

&gt;&gt;A&lt;&lt;

**INSTALLATION SERVICE POINT****>>A<< FRONT SEAT ASSEMBLY INSTALLATION**

AC600873AC

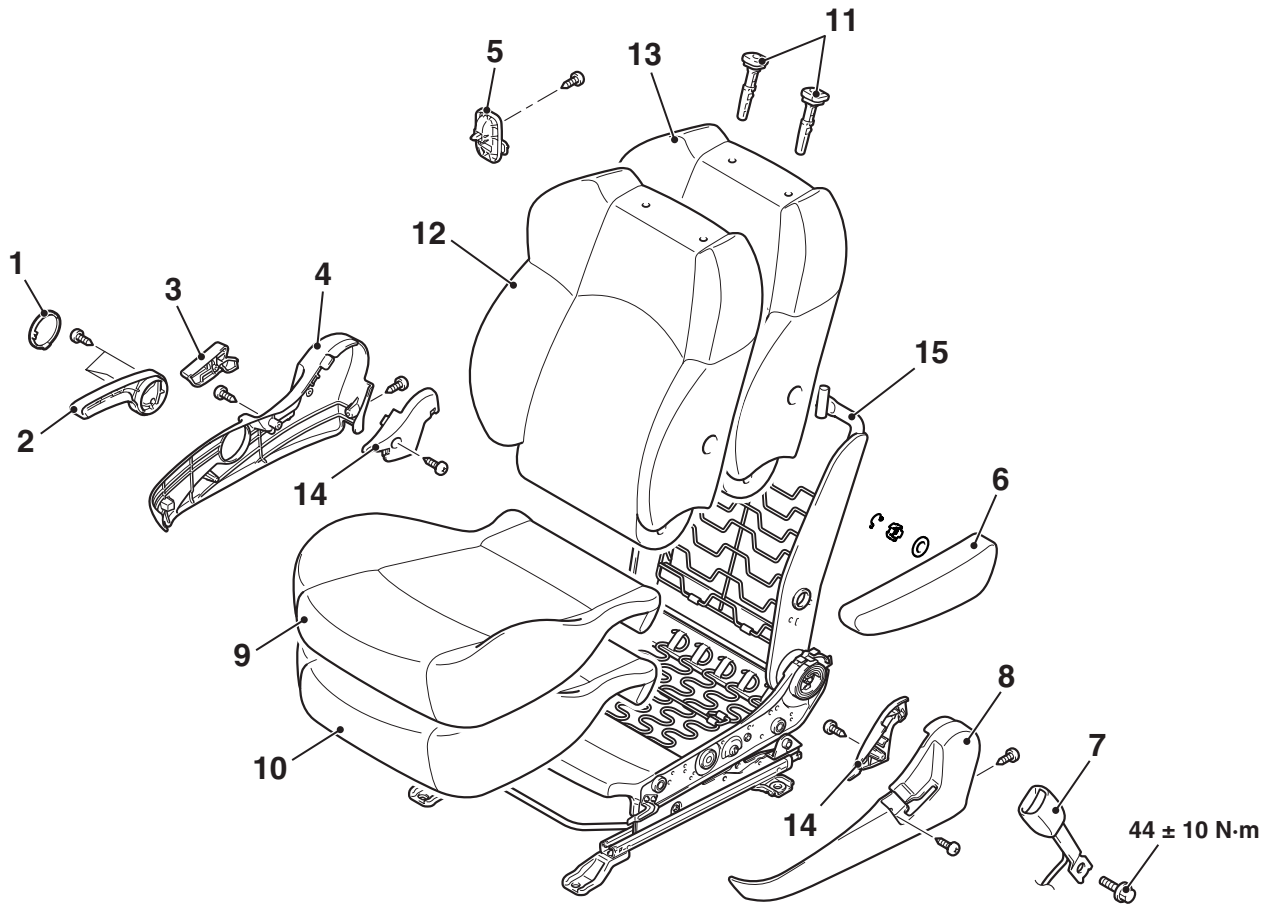
1. Confirm that the seat slide is locked. Then temporarily tighten all the nuts and bolts with no load applied to the front seat cushion.
2. Tighten all the nuts and bolts to the specified torque.

**Tightening torque:****Bolt: 44 ± 10 N·m****Nut: 30 ± 5 N·m**

DISASSEMBLY AND REASSEMBLY

<Except RECARO seat>

M1522001501084



AC602119AB

**Disassembly steps**

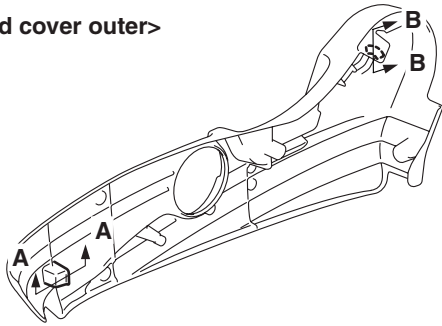
- |   |       |
|---|-------|
| 1. Height adjuster lever cap                                  | <<A>> |
| 2. Height adjuster lever                                      |       |
| 3. Reclining adjuster lever                                   |       |
| 4. Side shield cover outer                                    |       |
| 5. Hook   |       |
| 6. Armrest <Driver's side>                                    | <<B>> |
| 7. Inner seat belt  |       |
| 8. Hinge cover  |       |
| 9. Cushion cover <VRX> or cushion cover and pad assembly <LS> |       |
| 10. Cushion pad <VRX>   |       |

**Disassembly steps (Continued)**

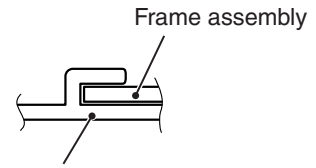
- |  |
|--|
| 11. Headrest guide   |
| 12. Seatback cover <VRX> or seatback cover and pad assembly <LS> |
| 13. Seatback pad <VRX>   |
| 14. Side shield cover inner                                      |
| 15. Frame assembly   |

CLAW POSITIONS

<Side shield cover outer>

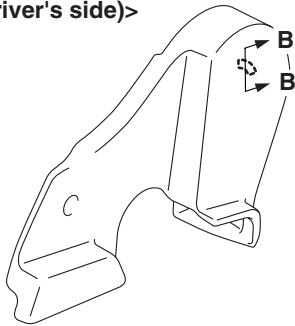


Section A – A

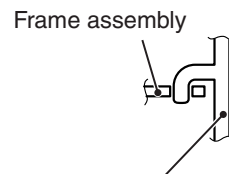


Side shield cover outer,  
hinge cover (passenger's side),  
Side shield cover

<Hinge cover (driver's side)>

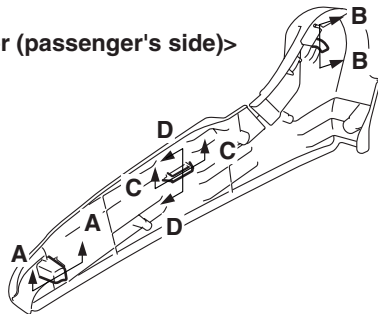


Section B – B

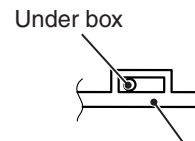


Side shield cover outer,  
hinge cover,  
side shield cover

<Hinge cover (passenger's side)>

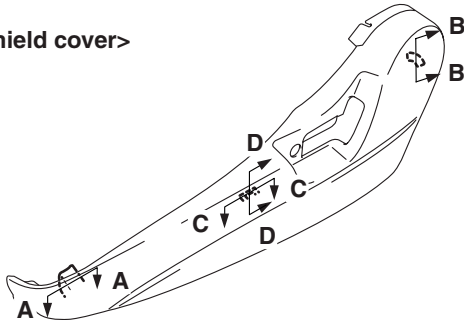


Section C – C

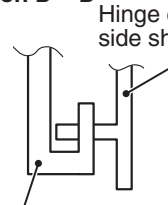


Hinge cover (passenger's side),  
side shield cover

<Side shield cover>



Section D – D

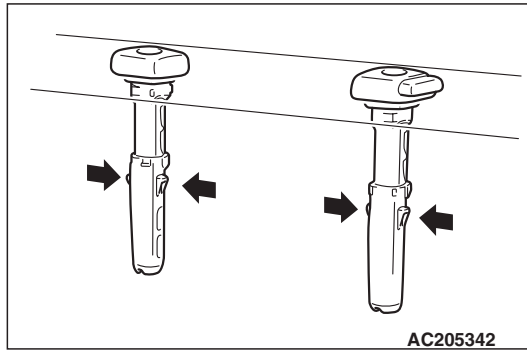


Hinge cover (passenger's side),  
side shield cover

Under box



**DISASSEMBLY SERVICE POINTS**  
**<<A>> HEADRESTRAINT GUIDE**  
**REMOVAL**



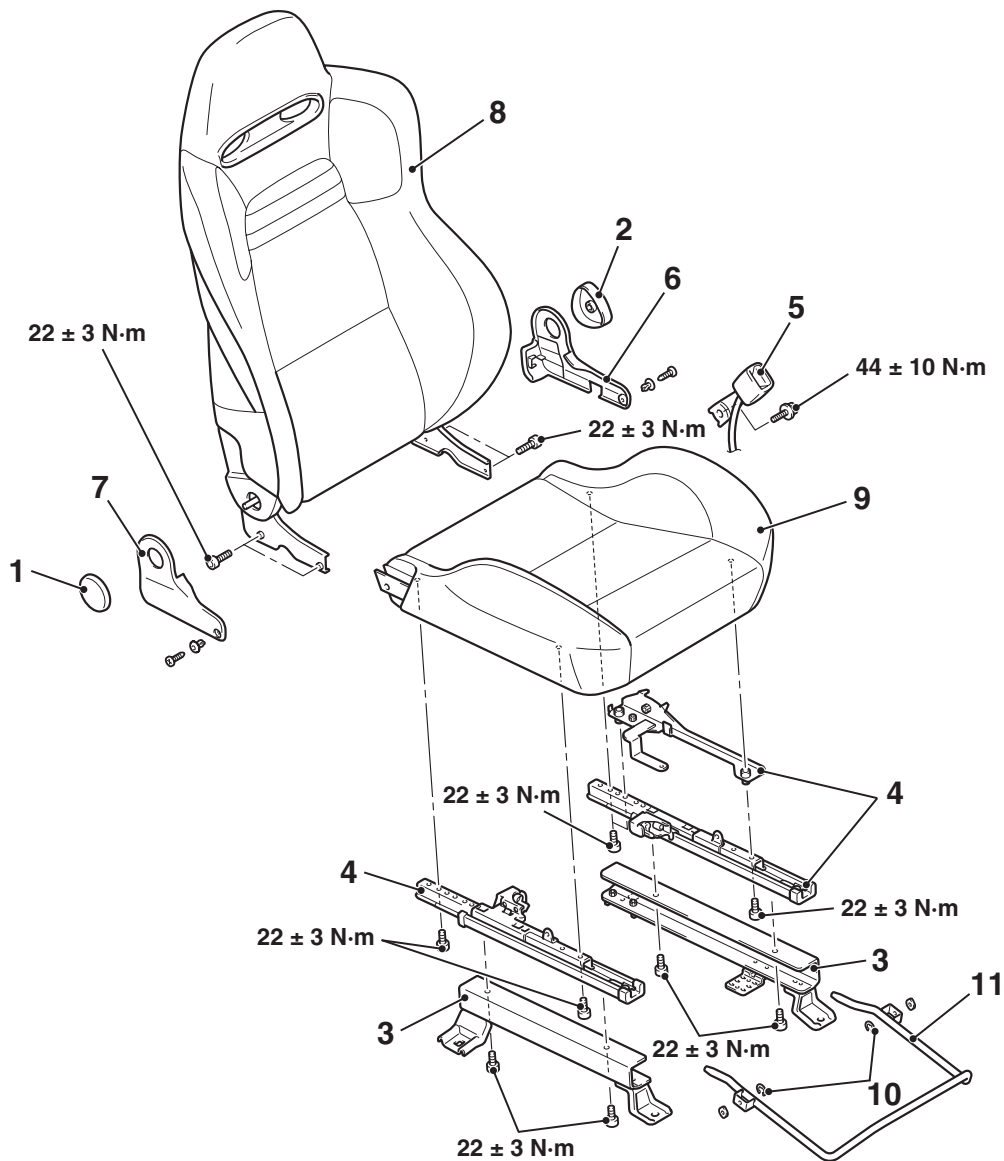
**<<B>> FRAME ASSEMBLY REMOVAL**

Do not remove the side-air bag module from the frame. <Vehicles with side and curtain air bag module>

## DISASSEMBLY AND REASSEMBLY

&lt;RECARO seat&gt;

M1522001501095



AC600699AC

**Disassembly steps**

1. Cap
2. Reclining adjuster knob
3. Leg assembly
4. Slide adjuster
5. Inner seat belt
6. Cushion shield inner

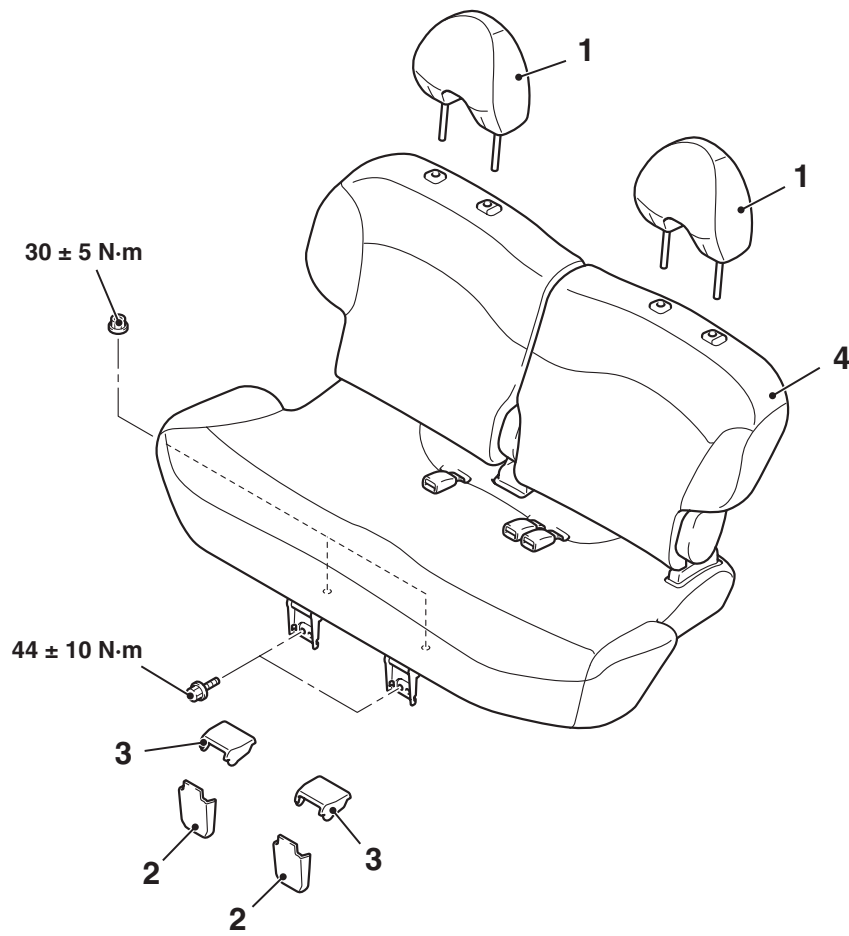
**Disassembly steps (Continued)**

7. Cushion shield outer
8. Seatback assembly
9. Seat cushion assembly
10. Snap ring
11. Slide adjuster lever

# REAR SEAT ASSEMBLY

## REMOVAL AND INSTALLATION

M1522001800394



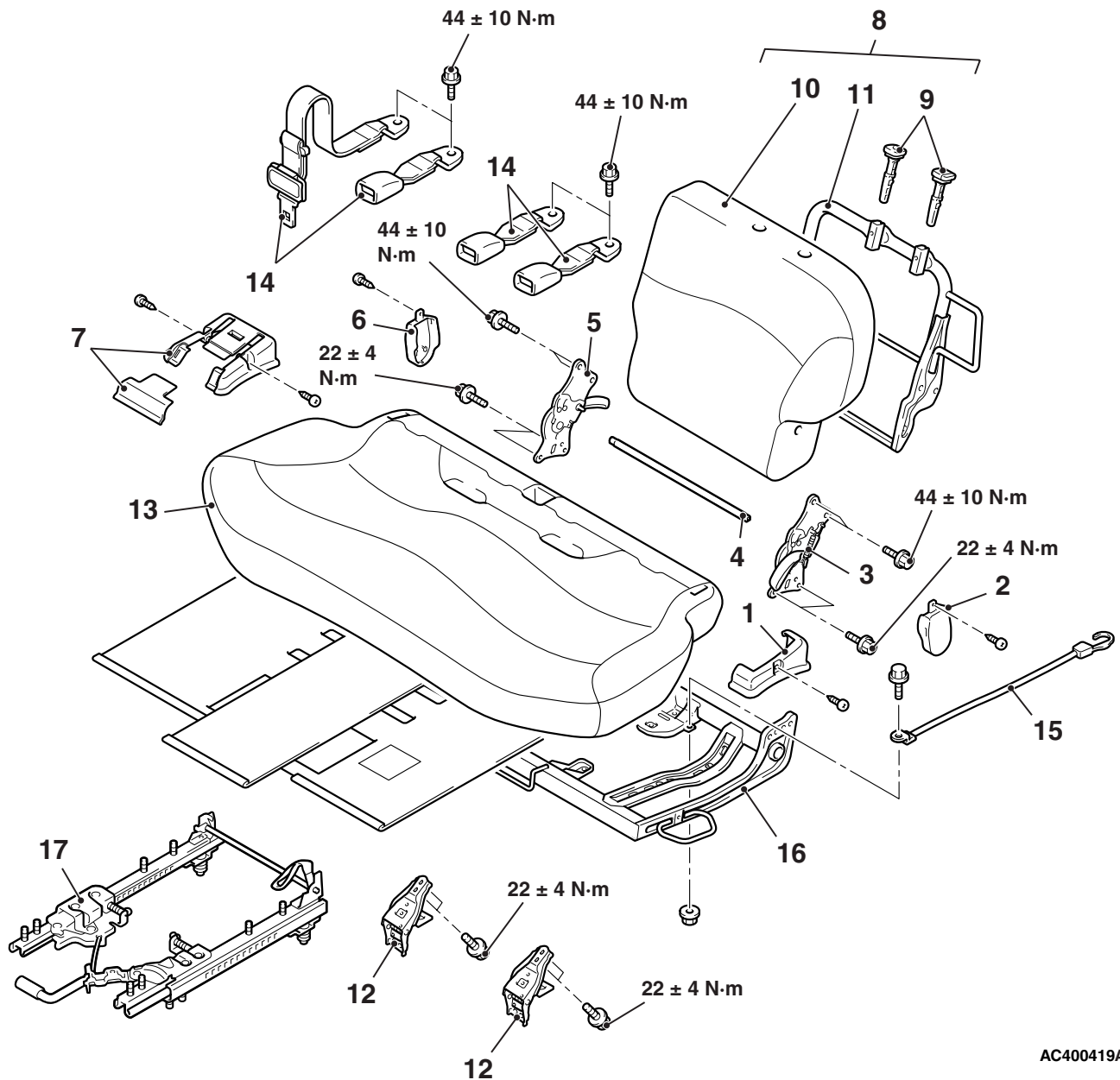
1. Headrest

- Removal steps**
2. Cushion anchor cover
  3. Anchor cover
  4. Rear seat assembly

AC400418AB

## DISASSEMBLY AND REASSEMBLY

M1522002000465



AC400419AB

**Disassembly steps**

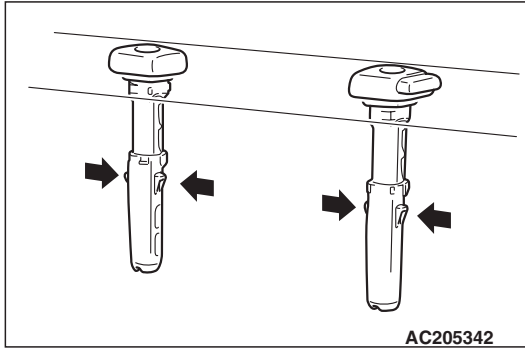
1. Hinge cover outer
2. Reclining adjuster cover outer
3. Reclining adjuster outer
4. Reclining adjuster shaft
5. Reclining adjuster inner
6. Reclining adjuster cover inner
7. Hinge centre cover
8. Rear seatback assembly
9. Headrest guide

**Disassembly steps (Continued)**

10. Seatback cover and pad assembly
11. Seatback frame
12. Hinge bracket
13. Cushion cover and pad assembly
14. Centre seat belt, inner seat belt
15. Band
16. Cushion frame
17. Slide adjuster

&lt;&lt;A&gt;&gt;

**DISASSEMBLY SERVICE POINT  
<<A>> HEADRESTRAINT GUIDE  
REMOVAL**



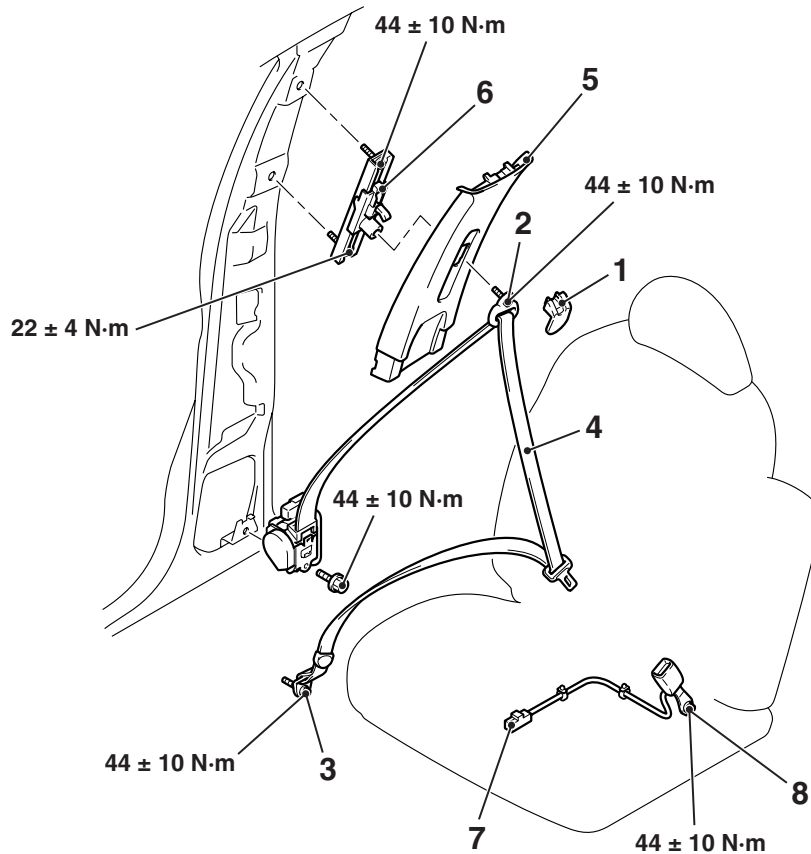
## FRONT SEAT BELT

## REMOVAL AND INSTALLATION

M1523001300499

**CAUTION**

SRS: Before removing and installing the seat belts with pre-tensioner, refer to GROUP 52B, Seat Belt with Pre-tensioner [P.52B-159](#).



AC601416AB

**Outer seat belt removal**

1. Sash guide cover
2. Seat belt shoulder anchor bolt
3. Seat belt lower anchor bolt
- Centre pillar trim lower (Refer to [P.52A-11](#)).
4. Outer seat belt (Refer to GROUP 52B, Seat Belt with Pre-tensioner [P.52B-159](#).)

**Outer seat belt removal**

5. Centre pillar trim upper (Refer to [P.52A-11](#)).

6. Adjustable seat belt anchor

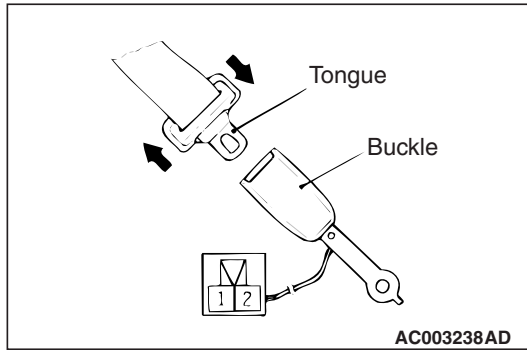
**Inner seat belt removal steps**

7. Seat belt switch connector
- Hinge cover (passenger's side) (Refer to [P.52A-23](#)).
8. Inner seat belt (Refer to [P.52A-26](#)).

**INSPECTION**

M1523004400202

**SEAT BELT BUCKLE SWITCH CONTINUITY CHECK**



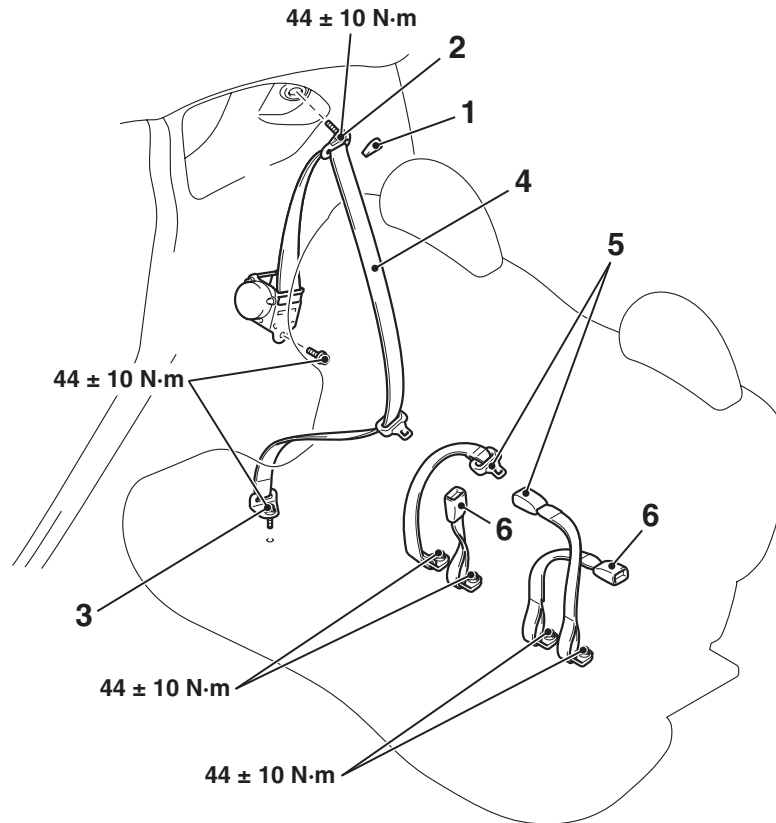
If there is no continuity, replace the seat belt.

Item	Tester connection	Specified condition
Fastened seat belt	1 – 2	Open circuit
Unfastened seat belt	1 – 2	Continuity (Less than 2 Ω)

## REAR SEAT BELT

## REMOVAL AND INSTALLATION

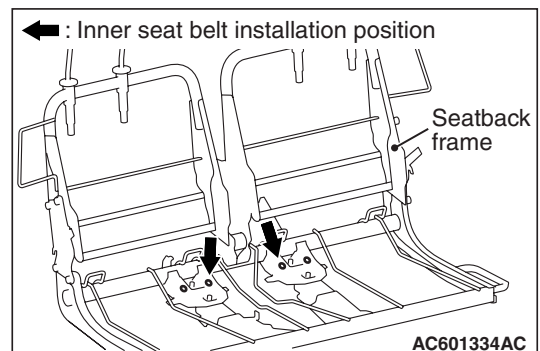
M1523001600713



AC601415AB

**Removal steps**

1. Sash guide cover
2. Seat belt shoulder anchor bolt
3. Seat belt lower anchor bolt
- Rear seat belt clip (Refer to [P.52A-11](#)).
- Quarter trim lower (Refer to [P.52A-11](#)).
4. Outer seat belt
5. Centre seat belt <Except RALLIART Version-R> (Refer to [P.52A-28](#)).
- >>A<< 6. Inner seat belt (Refer to [P.52A-28](#)).

**INSTALLATION SERVICE POINT****>>A<< INNER SEAT BELT INSTALLATION**

Be sure to install the inner seat belt to the exact position.